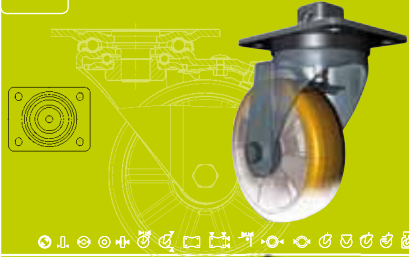


**i** Blicke

A Company on the Move

Page 6 - 27

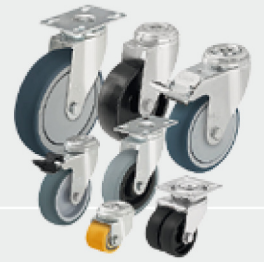
**i** Wheels and Castors Guide



Page 28 - 85

**1** Light duty wheels and castors

📦 40 - 280 kg  
🌀 35 - 150 mm



Page 86 - 111

**2** Synthetic castors

📦 50 - 110 kg  
🌀 50 - 125 mm



Page 112 - 129

**3** Wheels and castors with standard solid rubber tyres and rubber tread

📦 50 - 800 kg  
🌀 80 - 400 mm



Page 130 - 151

**4** Wheels and castors with soft rubber tyres and two-component solid rubber tyres

📦 50 - 650 kg  
🌀 100 - 280 mm



Page 152 - 161

**5** Heavy duty wheels and castors with elastic solid rubber tyres

📦 140 - 6000 kg  
🌀 80 - 620 mm



Page 162 - 189

**6** Wheels and castors with pneumatic tyres

📦 50 - 1300 kg  
🌀 180 - 536 mm



Page 190 - 199

**7** Heavy duty wheels and castors with super-elastic solid rubber tyres

📦 450 - 1885 kg  
🌀 250 - 525 mm



Page 200 - 205

**8** Wheels and castors with injection-moulded polyurethane tread

📦 150 - 1000 kg  
🌀 75 - 250 mm



Page 206 - 219

**9** Heavy duty wheels and castors with cast polyurethane tread Blicke Softhane®

📦 180 - 3600 kg  
🌀 80 - 300 mm



Page 220 - 235

**10** Heavy duty wheels and castors with cast polyurethane tread Blicke Besthane® Soft

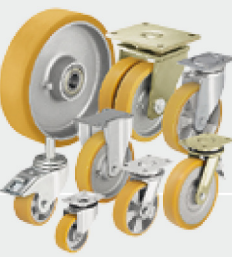
📦 180 - 1150 kg  
🌀 80 - 300 mm



Page 236 - 243

**11** Heavy duty wheels and castors with cast polyurethane tread Blicke Extrathane®

📦 100 - 30000 kg  
🌀 35 - 1000 mm



Page 244 - 265

**12** Heavy duty wheels and castors with cast polyurethane tread Blicke Besthane®

📦 400 - 30000 kg  
🌀 80 - 1000 mm



Page 266 - 273

